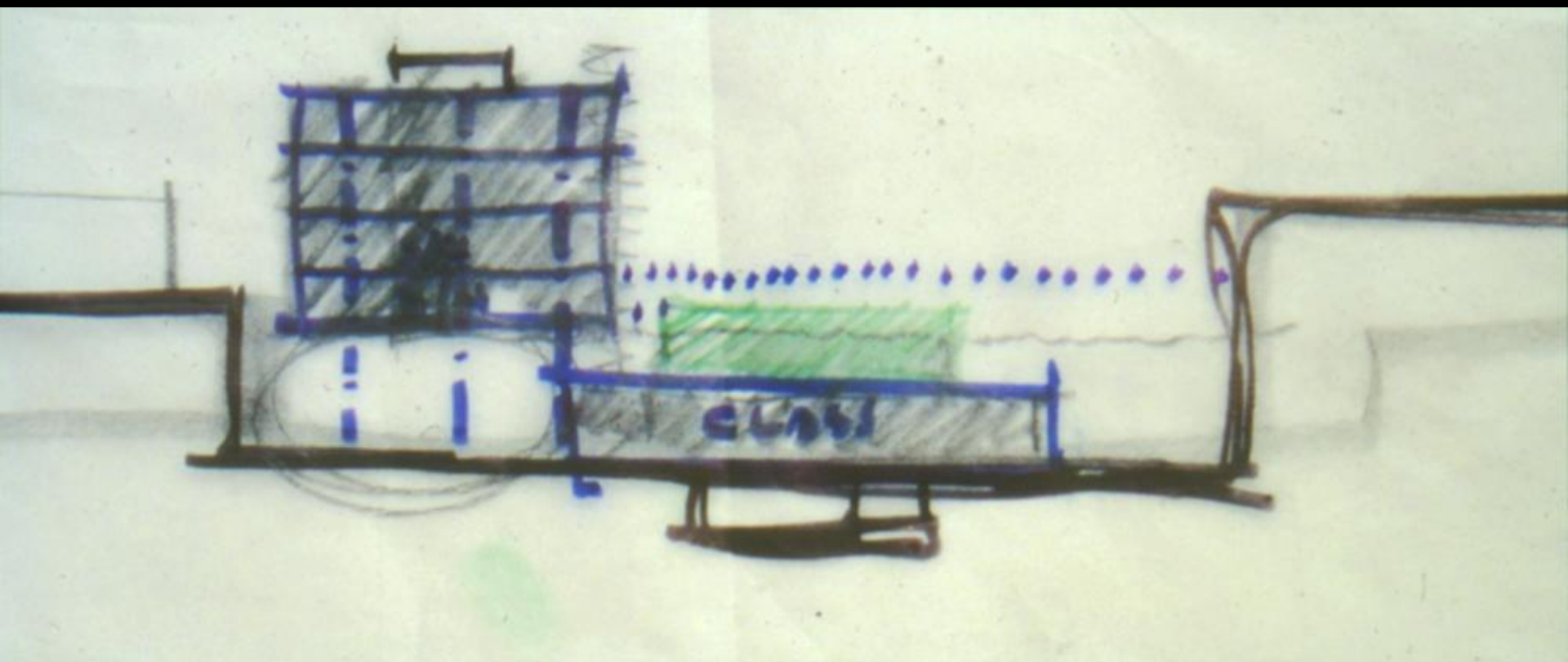


25 ft width

NORTH ELEVATION 1:30

Quigley 9/14/20











































Given step inside behold its beauty, but do not penetrate far. Still others
gals out again by the same gate. But there are always
Abdu'l-Baha

*“At the gate of the garden some stand and look within,
But do not care to enter.*

*Others step inside, behold its beauty,
but do not penetrate far.*

*Still others encircle the garden inhaling the fragrances
of the flowers, and having enjoyed their full beauty,
pass out again by the same gate.*

*But there are always some who enter and becoming
intoxicated with the splendor of what they behold remain
for life to tend the garden.”*

- Abdu'l-Baha























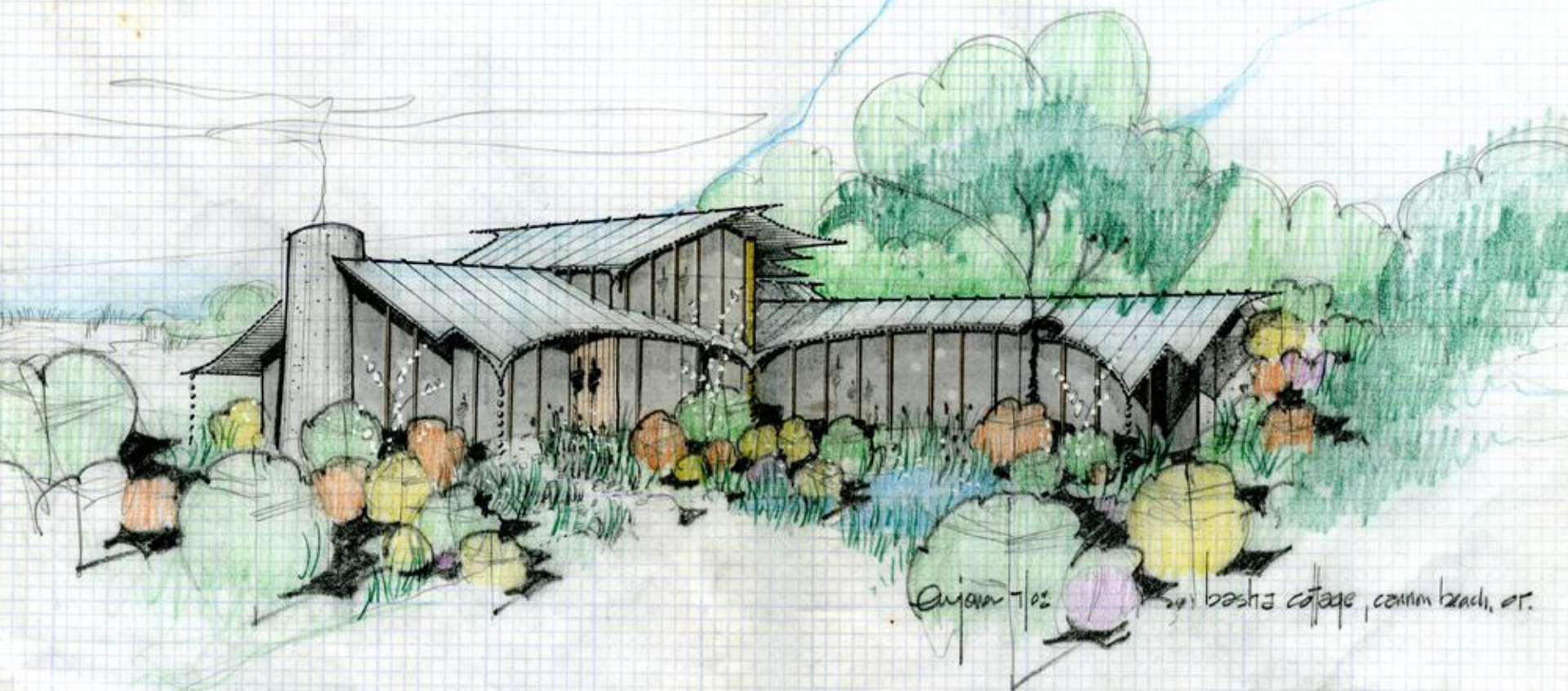






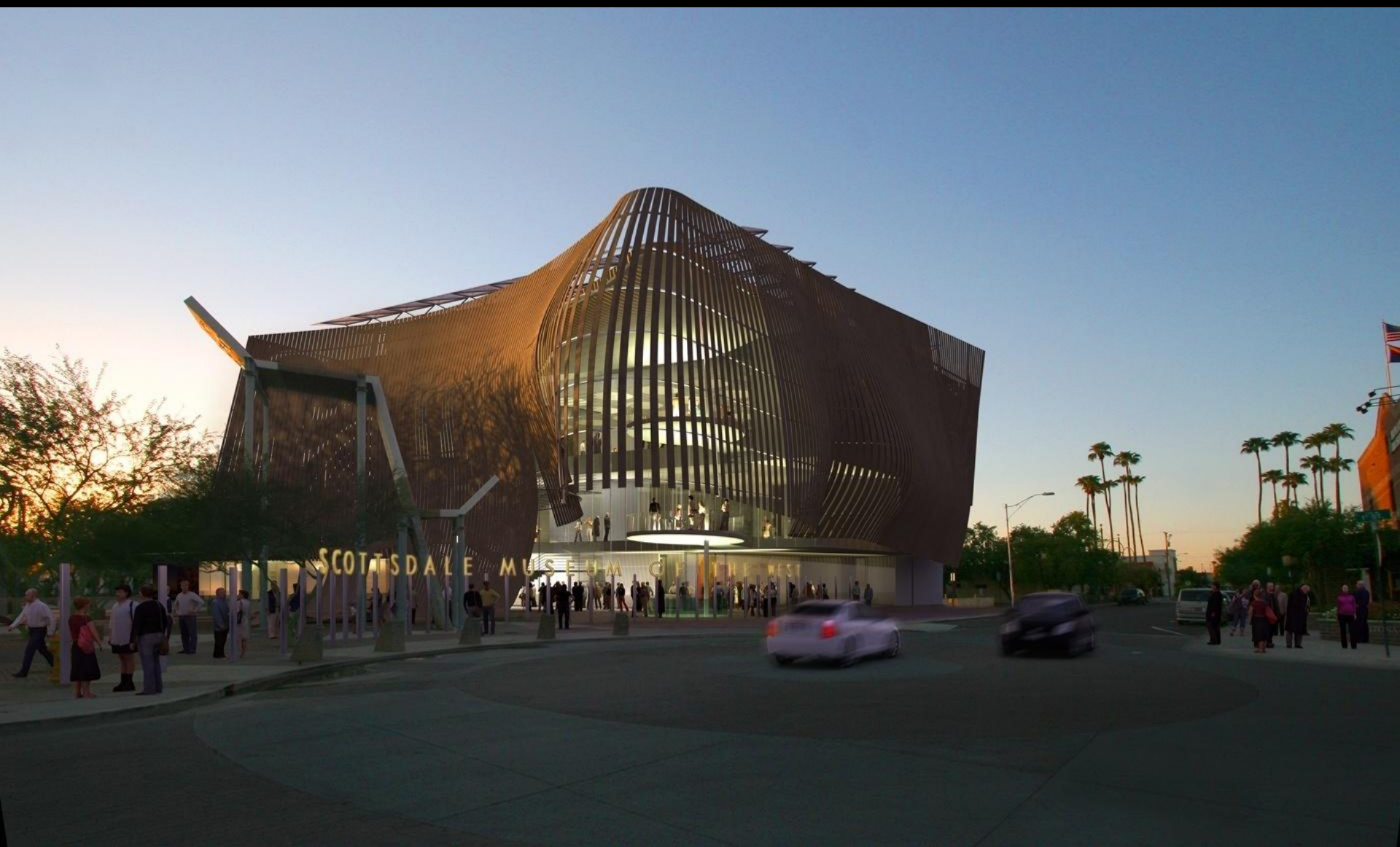






Qijian 102 basha cottage, canyon beach, or.



































MULTIPLE FUNERALS
IN A DAY
VIOLENT ACTS LEAD
US TO WAR
05-07-1975, 12-07-1975
08-04-1964 & 09-1975
KILLED BY
ORGANISTAN
OF PHOENIX MADE KIDS

8:57 AM
FT 0924 ASSISTERS
FIGHT HILLYERS
07 04 02



"MUST BOMB BACK

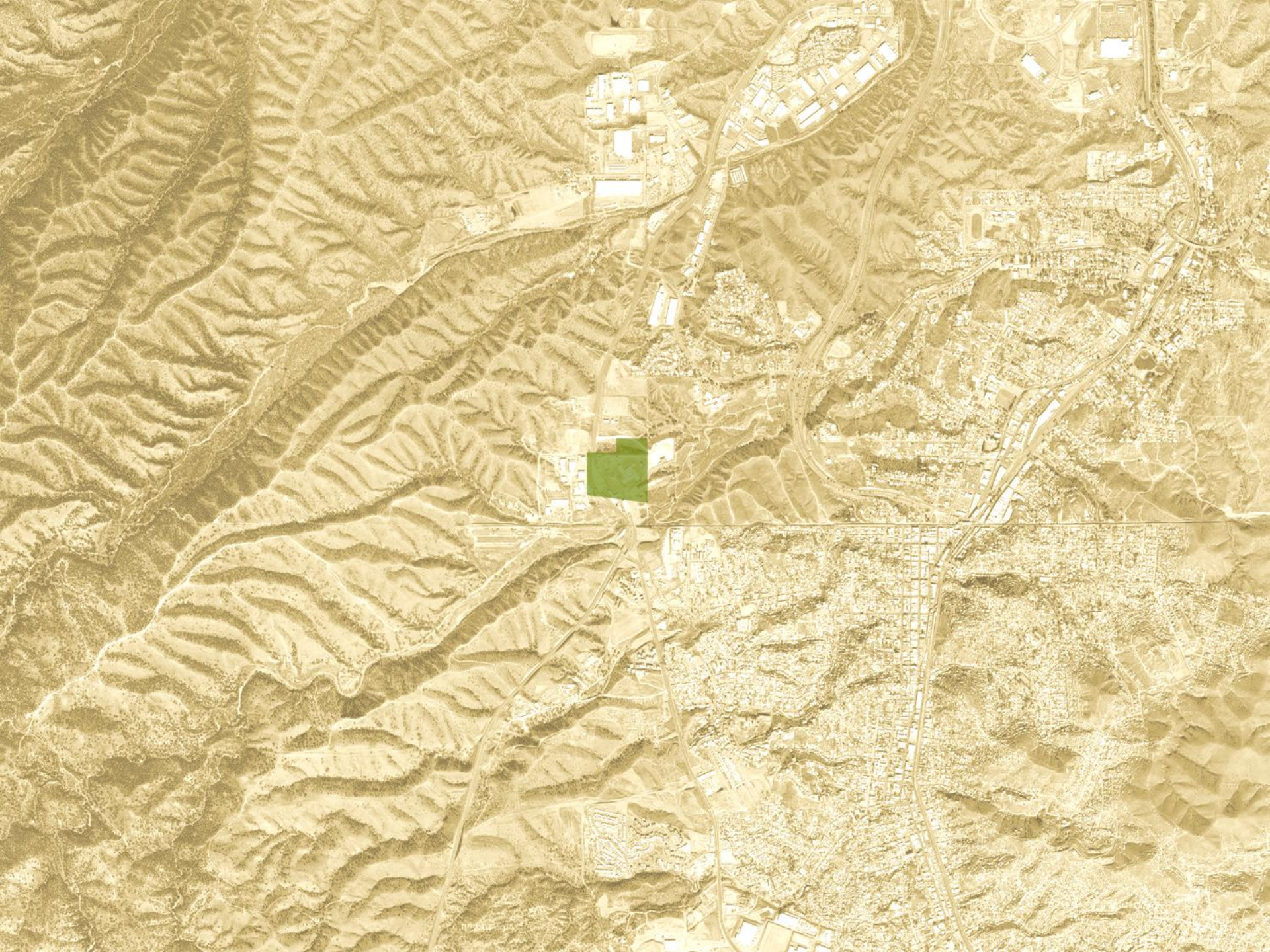
"YOU DON'T WIN

BATTLES OF TERRORISM
WITH MORE BATTLES"



























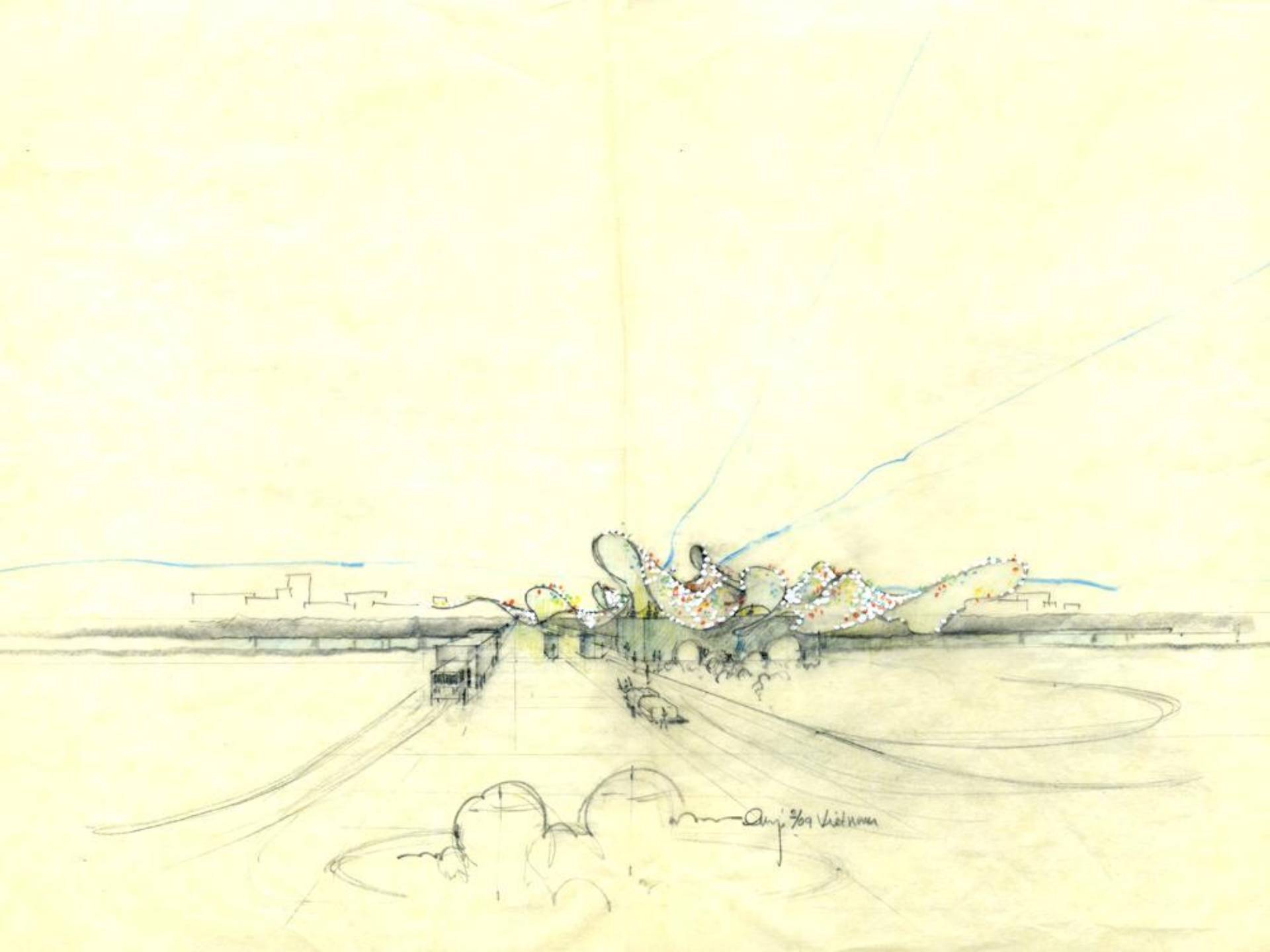












Quỹ 709 Vietnam

Border Lines

Líneas Fronterizas

*A weight carried by two
Weighs only half as much*

The world on a map looks like the drawing of a cow
In a butcher's shop, all those lines showing
Where to cut.

That drawing of the cow is also a jigsaw puzzle,
Showing just as much how very well
All the strange parts fit together.

Which way we look at the drawing
Makes all the difference.
We seem to live in a world of maps:

But in truth we live in a world made
Not of paper and ink but of people.
Those lines are our lives. Together,

Let us turn the map until we see clearly:
The border is what joins us,
Not what separates us.